

Chester County COORDINATED ENTRY SYSTEM EFFICACY

May, 2023

What is Coordinated Entry?

Coordinated entry supports fair, equitable, and rapid access to housing assistance and stability services. All services in the coordinated entry system are tracked through the Chester County Homeless Management Information System to help generate data that informs system improvement. Each year, we evaluate this data looking for markers of success and areas for improvement.

According to the U.S. Department of Housing and Urban Development, an effective coordinated entry system ensures that assistance is allocated as effectively as possible and is accessible no matter where or how people present.

How do we measure success?

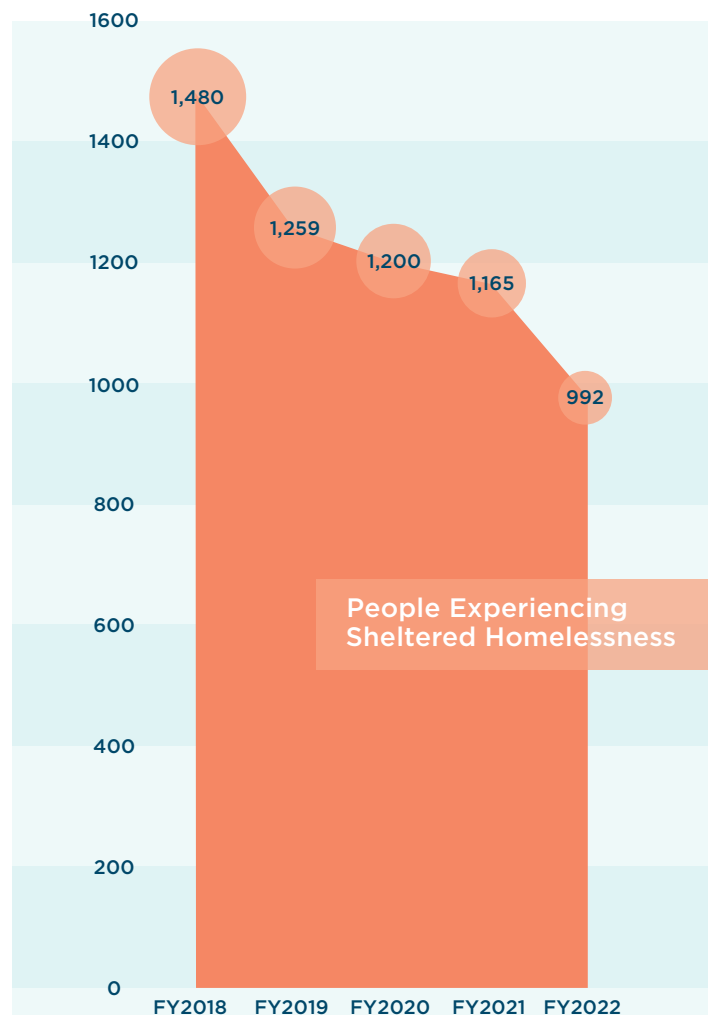
To measure the efficacy of our system, the Chester County Partnership to End Homelessness looks for:

- an overall decrease in the number of people experiencing homelessness,
- a decrease in the number of people experiencing homelessness for the first time,
- a decrease in the length of stay in emergency shelters and transitional housing (interim housing),
- a decrease in the rate of returns to homelessness,
- successful employment and income growth, and
- successful placement into/retention of permanent housing.

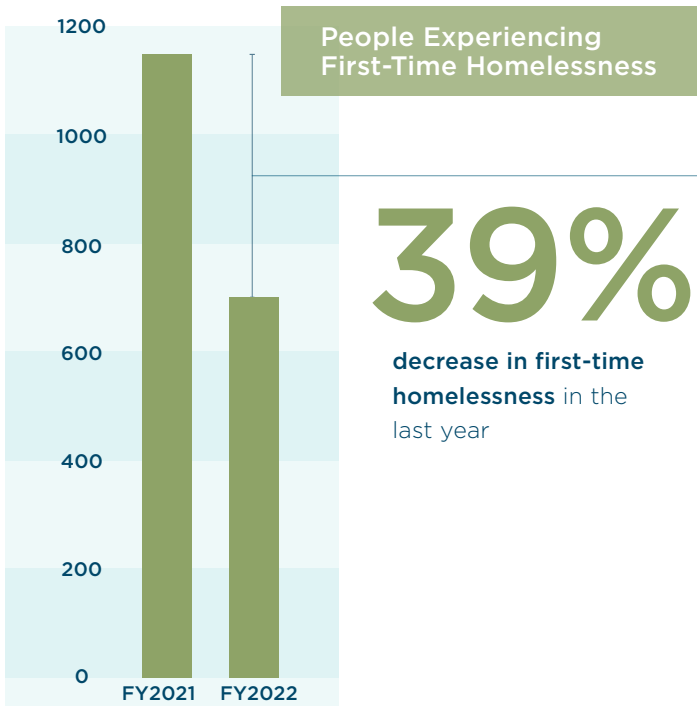
What does the data tell us?

People Entering Shelters and First-Time Homelessness

Thanks to the work of our network of partners, there has been a steady **decrease in the number of people entering participating emergency shelters in our community over the past five years, from 1,480 in 2018 to 992 in 2022 (a 33% decrease).**



In addition, there has been a **decrease in the number of people experiencing homelessness for the first time in the last year, from 1,141 in 2021 to 694 in 2022 (a 39% decrease).**



Chester County PA-505 HUD System Performance Measure, Metric 5.2, FY21-FY22

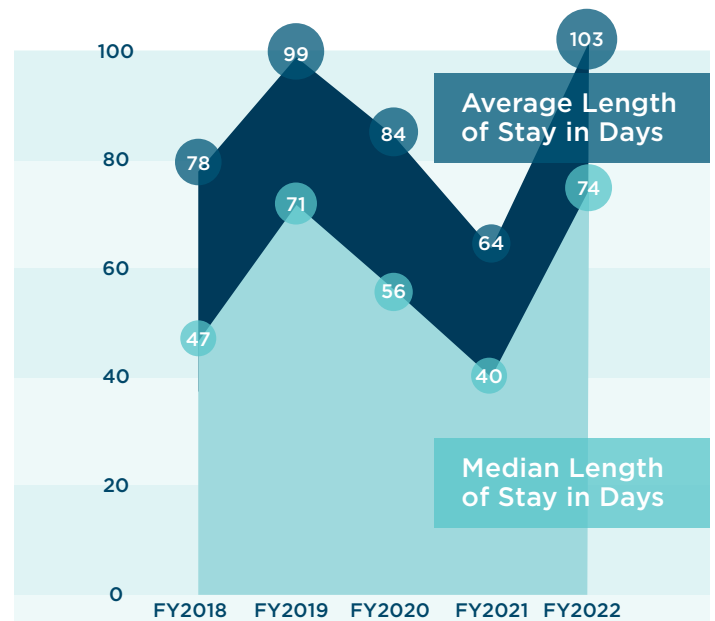
The data shows how effective the coordinated entry system and Housing First, an approach that prioritizes permanent housing, can be in connecting people experiencing housing instability and homelessness to housing and long-term stability. The decrease in the overall number of people entering shelters and those experiencing homelessness for the first time can be attributed to increased prevention efforts implemented across the county.

Prevention provides housing relocation and stabilization services to prevent an individual or family from entering the emergency shelter system. Prevention efforts across the county include the Friends Association Eviction Prevention Case Resolution program, which provides free legal and social services support needed to prevent evictions and future housing instability, and the Emergency Rental Assistance Program (ERAP) grant funding through the Chester County Department of Community Development, which can be used to pay rent and utilities or rehousing costs.

Length of Stay in Emergency Shelters

The average length of stay in emergency shelters has increased by 61% from 64 days in 2021 to 103 days in 2022.

This increase in the average length of stay could be attributed to inflation, a tightening of the housing market, high healthcare costs, reduced capacity and resources to support rapid resolution, the inability to rapid rehouse and provide supportive housing, as well as other demographic and health factors such as race, gender, sexual orientation, age, disability, mental health issues, or substance use disorder.



Chester County PA-505 HUD System Performance Measure, Metric 1.1 a., FY21-FY22

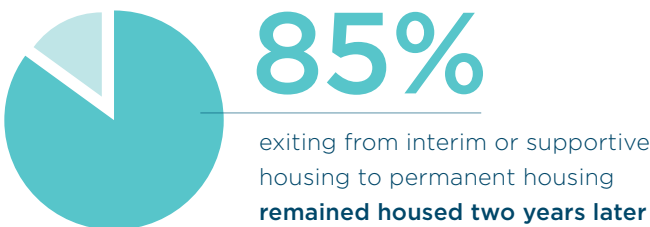
Rapid resolution combines diversion and rapid exit strategies to help avoid literal homelessness or minimize the length of stay in emergency shelters. Diversion works to preserve current housing or assist individuals in finding temporary housing within their network of family, friends, or community, while rapid exit aims to ensure homelessness is as brief as possible, helping individuals return to housing on their own or with limited support and financial assistance.

Rapid rehousing and supportive housing provide case management, support services, and financial assistance to place individuals in permanent housing and provide the support they need to retain housing long-term.

Housing Assistance and Stability Services

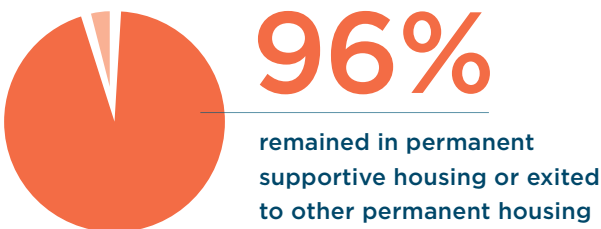
Coordinated entry supports fair, equitable, and rapid access to housing assistance and stability services. The Housing First approach supports stable housing and individual choice as a foundation for meeting basic needs, accessing support services, and achieving long-term goals.

Data shows that the Housing First approach helps individuals and families remain in permanent housing. **85% of people who exited from interim or supportive housing to permanent housing remained housed two years later.**



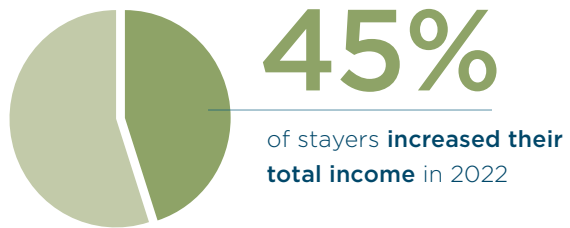
Chester County PA-505 HUD System Performance Measure, Metric 2., FY21-FY22

Of those individuals who were enrolled in permanent housing programs, **96% remained in permanent supportive housing or exited to other permanent housing.**



Chester County PA-505 HUD System Performance Measure, Metric 7b.2., FY21-FY22

Nearly half (45%) of individuals staying in CoC funded programs in 2022 increased their total income thanks to case management support to find employment or job training opportunities as well as support enrolling in government assistance and benefits programs (e.g. SSI, SSDI, etc).



Chester County PA-505 HUD System Performance Measure, Metric 4.3, FY21-FY22

Similarly, **nearly half of individuals (44%) leaving CoC funded programs in 2022 also increased their total income** setting them up for long-term stability and well-being.



Chester County PA-505 HUD System Performance Measure, Metric 4.6, FY21-FY22



Learn more about ending homelessness in Chester County at endhomelessnesschesco.org



Take action and connect with [@ChescoPartnership](https://www.facebook.com/ChescoPartnership) on Facebook



Become a partner and support, rent, or develop affordable housing